

# Chapter 9

## Ecotones and Ecological Gradients

Salit Kark

### Glossary

Beta-diversity	Also termed species turnover, beta-diversity refers to the change in species as one moves between habitats, communities, or ecosystems.
Divergence-with-gene-flow model of speciation	A model explaining the process of species formation (speciation) in which new species diverge in the face of gene flow; the movement of genes within a group that results from mating with immigrant individuals.
Ecotone	A transition zone between two or more different ecological communities or regions.
Ecotone effect	The pattern of increased species richness (number of species) and abundance in ecotones and the occurrence of unique ecotonal species.
Edge effect	The effect of the juxtaposition of contrasting environments on an ecosystem.
Geographic information systems (GIS)	A computer-based system for creating and managing spatial data and associated attributes. It enables the capture, storage, retrieval, analysis, and display of spatial (location-based) data.

---

This chapter was originally published as part of the Encyclopedia of Sustainability Science and Technology edited by Robert A. Meyers. DOI:[10.1007/978-1-4419-0851-3](https://doi.org/10.1007/978-1-4419-0851-3)

S. Kark (✉)

The Biodiversity Research Group, Department of Ecology, Evolution, and Behavior,  
The Hebrew University of Jerusalem, Jerusalem 91904, Israel

ARC Centre for Environmental Decisions (CEED) School of Biological Sciences,  
The University of Queensland, St Lucia, QLD 4072, Australia  
e-mail: [salit@hebrew.edu](mailto:salit@hebrew.edu)

**Remote sensing**      The science and art of obtaining information about an object, area, or phenomenon through the analysis of data acquired by a device that is not in contact with the object, area, or phenomenon under investigation (e.g., via a satellite image).

## **Definition of the Subject**

Ecotones are areas of transition between ecological communities, ecosystems, or ecological regions (such as Mediterranean and desert). Ecotones often occur along ecological gradients. Such gradients are created as a result of spatial shifts in elevation, climate, soil, and many other environmental factors. Ecotones commonly coincide with areas of sharp climatic transition along environmental gradients. They occur at multiple spatial scales, from continental-scale transitions between major biomes to small-scale ecotones where local vegetation communities and microhabitats coincide. They show a diversity of boundary types that range from natural boundaries (e.g., altitudinal, latitudinal transitions) to human-generated ecotones (e.g., forest clear-cut edges or urban ecotones). Ecotones have been studied in the past four decades in an ecological context and in recent years are receiving increasing attention in the context of biodiversity conservation. Various studies have shown that species richness and abundances tend to peak in ecotonal areas, though exceptions to these patterns occur. Ecotones are “natural laboratories” for studying a range of evolutionary processes, such as the process by which new species form, also termed speciation. Some researchers argue that ecotones deserve high-conservation investment, potentially serving as speciation and biodiversity centers. Because ecotones are often small in size and relatively rich in biodiversity, conservation efforts in these areas may prove to be an efficient and cost-effective conservation strategy.

## **Introduction**

While substantial research in the past decades has focused on distinct ecological regions, communities, and ecosystems, areas of transition between these regions have received much less attention. These areas, nevertheless, sustain rich and unique biodiversity and may have an important role in sustaining future biodiversity. However, studies have shown that species richness and abundances tend to peak in ecotonal areas, though exceptions to this pattern occur. This is likely because ecotonal areas hold species from two or more neighboring communities and possibly due to high spatial heterogeneity and high speciation rates in ecotonal areas. In addition, ecotones have been shown, in some cases, to hold ecotonal species and genotypes that are uniquely characteristic of the ecotone.

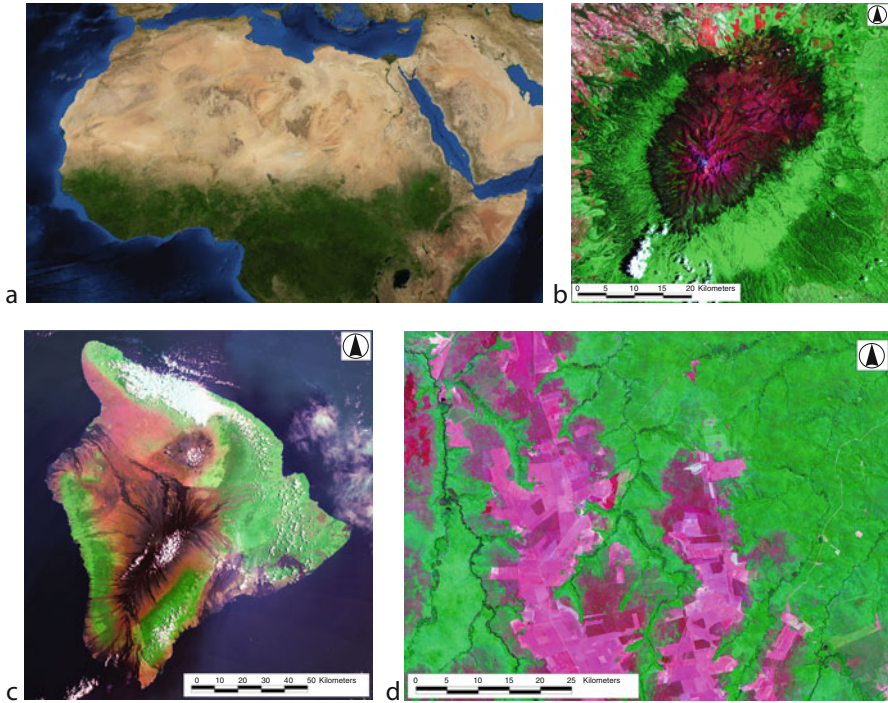
Several studies have found evidence that some species are diverging in ecotonal regions, suggesting that transitional areas may serve as speciation centers. Recent work has shown increased genetic and morphological diversity in ecotonal regions compared with neighboring areas. Ecotonal populations often coincide with peripheral populations along a species range. Some researchers suggest that because ecotones often hold marginal populations that depend on other parts of the range for the maintenance of genetic diversity, they do not deserve much conservation interest. Alternatively, in the face of global climate and environmental changes, it has also been argued that ecotones deserve special conservation investment, potentially being speciation and biodiversity hotspots that hold relatively resilient populations. This entry will provide a short overview of the history of ecotone research, recent novel findings in the area and the implications for future conservation, biodiversity, and sustainability research.

## Conceptual Framework

Ecotones are areas where ecological communities, ecosystems, or biotic regions coincide. They often occur in areas of steep environmental transition, along environmental gradients. In these transitional regions, the environment rapidly shifts from one type to another based on abiotic (e.g., climatic) and/or biotic (e.g., community structure) factors [13, 19]. The origin of the word “ecotone” is in the Greek roots “oikos” (home) and “tonus” (tension). Many different definitions and terms have been used in the literature to describe ecotones and areas of ecological transition. These include boundary regions, borders, meeting zones, transitional zones, tension zones, zones of intermingling, and zones of transgression [19]. The definition often contrasts ecotones with more homogenous areas found on both sides of the transition or to the landscape as a whole. Ecotones can occur in both terrestrial and aquatic systems, and cover several spatial scales, from large spatial-scale ecotones, where biomes meet [40] to local-scale transitions, such as mountain treelines ([11]; see Fig. 9.1). These areas are sometimes considered to be dynamic zones of interaction between communities, which are unstable over time [19]. As suggested by Odum [30], Ecotones do not simply represent a boundary or an edge; the concept of an ecotone assumes the existence of active interaction between two or more ecosystems with properties that do not exist in either of the adjacent ecosystems. Ecotonal regions show a diversity of transitions that range from natural transitions (e.g., altitudinal and latitudinal transitions) to human-generated ecotones, sometimes termed anthropogenic ecotones (e.g., forest clear-cut edges or urban ecotones) [24], as shown in Fig. 9.1.

## History of Research on Ecotones and Biodiversity

For over 100 years, since the late nineteenth century, there has been scientific interest in boundary regions and edges of ecological systems. A conceptual



**Fig. 9.1** Satellite images showing a variety of natural and human-generated ecotones at several spatial scales: (a) Ecotones in the Sahel region of Africa (see text). (b) Altitudinal ecotones between vegetation belts in Mt. Kenya. (c) Natural and human-made ecotones on Hawaii's big island. Ecotones vary over different slopes and elevations. Note also the sharper ecotones in areas where lava has flowed. (d) Human-related ecotones resulting from deforestation (in pink) in the Amazon Basin, Brazil. On the far left and far right, in dark green, natural riparian ecotones can be detected along the rivers. (Source of Fig. a Stöckli et al. [39] NASA Blue Marble Next Generation, August 2004. True color composite of MODIS satellite images. Downloaded from: <http://visibleearth.nasa.gov/> [42].) (Source of Fig. b–d MDA Federal [25] NASA GeoCover circa 1990 Landsat images. False color composite of Landsat bands 7, 4 and 2. Green shades represent vegetation, magenta and brown represent bare soil, black represent water bodies, recent lava flows of shadows, cyan shades represent snow, and white represents clouds. Downloaded from: <https://zulu.ssc.nasa.gov/mrsid/> [3].) (All images are public domain. The figures were produced by Noam Levin)

ecological framework for the study of ecotones was given by Odum in 1953. Odum discussed the ecotone effect, which he characterized as increased richness and abundance in ecotones and the occurrence of unique ecotonal species. Until the 1970s, there was considerable interest in ecotones within the scientific community (reviewed by [32]). This interest subsided as focus on more homogenous and well-defined ecosystems and communities (e.g., tropical rain forests and tundra) became common. A revival of research in the field focusing on ecotones and their effects on biodiversity was seen in the late 1980s and 1990s, with the development of new research areas, especially those of landscape ecology and of conservation

biology [11, 13]. Studies on ecotones in the 1980s often focused on material flow (e.g., water and nutrients) across communities and on ecosystem processes in these boundary regions [12]. Much of the work focused on wetlands and on riparian zones, where land–water interfaces occur (reviewed in [45]). Later work in the 1990s more directly examined the effect of ecotones on biological diversity, and especially on the relationship between ecotones and processes leading to morphological divergence, patterns of genetic and phenotypic diversity, species richness, rarity, and their conservation implications (reviewed in [17]).

## Approaches for Measuring Ecotones

Due to the fact that ecotones can be rarely delimited by a fine line, their measurement and mapping is not simple. A wide range of research approaches and tools have been used to detect and quantify ecotones. These include, among others, simulation modeling, geographic information systems (GIS), remote sensing, and statistical tools that enable quantification and analysis of ecotones of different types and over several spatial scales. Diverse approaches for the quantification of the steepness of gradients exist [17]. Methods for measuring and characterizing ecotones depend on the data available (e.g., quantitative or qualitative, grid- or transect-based data), with one of the simplest approaches, proposed by Womble in 1951, being the quantification of the magnitude of the first and second derivatives (rates of change in a given variable or several variables along a spatial gradient) [44]. These approaches often examine the values of variables in an area (e.g., a  $1 \times 1$  km grid square) relative to its neighboring regions. The basic idea is to detect areas of sharp environmental transition by finding the areas with the highest rate of change in the value of a given variable or several variables between adjacent squares (pixels). Specific software for the detection of boundary regions and analysis is now available (e.g., BoundarySeer: [http://www.terraseer.com/products\\_boundaryseer.php](http://www.terraseer.com/products_boundaryseer.php)), enabling more widespread use of advanced statistical tools for the study of areas of transition [5, 8]. These tools can also be applied to the study of ecotonal regions.

In recent years, new approaches to quantify changes in diversity across gradients and boundary regions have been developed and are being applied. Among these is a range of new beta-diversity estimates of species turnover in space [20, 26]. These have been developed in the past decades, since Wilson and Shmida's [43] review on beta-diversity estimates. Beta-diversity and species turnover are often used when studying gradients, and although they do not focus necessarily on ecotonal areas, they can be applied to the study of ecotones.

One of the most promising directions in ecotone and boundary measurement is the use of tools developed in other areas of science. These include fields such as physics, remote sensing, and image analysis, where substantial advancements in

boundary detection and gradient quantification methods have been made. Remote-sensing tools, for example, can use data occurring over several orders of magnitude, using satellite-derived data currently available at a resolution of 0.5 m to 100 km. Further application of these tools at multiple spatial resolutions will provide a better understanding of ecotones. Recent work has shown that remote sensing tools can be effectively used to detect ecotones and to predict species richness and rarity (e.g., range size rarity) in ecotones, especially in mountains where latitudinal gradients occur (e.g., [22, 23]).

## Patterns of Biodiversity in Ecotones

There have been multiple studies on patterns of biodiversity in ecotonal areas, which have led to a range of results. Recent work is providing increasing evidence that boundary regions between ecological communities can be highly diverse at both the within-species and community levels. Ecotones have been shown to hold especially high biological diversity over several spatial scales, at both the community level (when examining species richness, i.e., the number of species in an area) and at the within-species level (morphological and genetic diversity) as reviewed by Kark and van Rensburg [17]. Other studies, however, have shown conflicting results, making it difficult to generalize without carefully examining each case, community, and region.

Early on, Odum [30] pointed at high species richness and abundance in ecotones and suggested that the ecotonal community commonly contains many species that are characteristic of, and sometimes restricted to, the ecotone. In a continental-scale study of New World birds, Kark et al. [16] examined the relationship between passerine richness and rarity of  $\sim 2,300$  passeriform species in 4,889 one-degree New World grid cells and the distance of the cells to boundaries between adjacent plant-based ecoregions. They found that areas nearer to transitions between ecoregions had more bird species, and also scored more highly in terms of species rarity. The findings of their work suggest that transitional environments harbor many rare species, in addition to high richness. At the community level, there is also some evidence for high species richness in ecotonal areas in marine systems. For example, van Rensburg et al. [41] showed at the subcontinental scale in South Africa that species richness and range size rarity at a spatial resolution of quarter degree are generally negatively correlated with distance to areas of transition areas between vegetation communities for both birds and frogs. Areas with more range-restricted species were located significantly closer to areas of transition areas between vegetation communities than expected by chance [41]. Similarly, in the Gulf of Aden, Kemp and colleagues [18] found high-reef fish diversity in an ecotone harboring a unique mixing of the three distinct faunas of Oman, the Red Sea, and the Indian Ocean.

## Processes Shaping Biodiversity and Sustainability in Ecotones

### *Ecotones and Evolutionary Processes*

Ecotones are “natural laboratories” for studying a range of evolutionary processes, such as the process by which new species form, also termed speciation. This process is of major interest to evolutionary biologists who define three major types of speciation: allopatric, parapatric, and sympatric. These models are based on the degree of geographical subdivision between populations that lead to the formation of new species. Allopatric speciation happens in geographical isolation, and has been for many years considered the major form of speciation. Parapatric speciation occurs in adjacent populations with gene flow among them, often along clines. Sympatric speciation occurs when populations are geographically congruent, and are found in the same area. The study of ecotones has led to a better understanding of the potential importance of parapatric and sympatric speciation as mechanisms for speciation. Ecotones have been proposed by some authors to be centers of evolutionary novelty that maintain evolutionary process, and as regions where parapatric (or sympatric) speciation processes may take place [33]. As such, ecotones and areas of environmental transition have been suggested as natural laboratories where evolutionary processes and barriers to gene flow can be examined [33].

A review by Moritz et al. [27] summarized the major models of evolutionary processes that promote diversification of rain forest faunas. They include the divergence-with-gene-flow model, which suggests that adaptive divergence caused by selection forces occurs across environmental gradients, leading to speciation even in the face of gene flow across ecotones. This means that speciation does not require isolation in cases where selection is strong enough to separate populations. This process is expected to occur especially where very different environments meet in the ecotone, for example, at the border between a dry and wet rain forest. This may mean that even when gene flow continues, strong selection pressures can lead to divergence.

Support for the divergence-with-gene-flow model comes from recent research examining divergence using molecular genetic, phenotypic, and experimental approaches [27, 33, 34, 37]. Smith et al. [37], studying the little greenbul (*Andropadus virens*), a passeriform bird in the rain forest–savannah ecotone region of Cameroon, found especially high morphological divergence in the ecotone. The authors proposed that when the ecotone is large enough, natural selection processes could be strong enough to generate morphological differences similar to those seen in reproductively isolated species even when high rates of gene flow occur. Their data support the divergence-with-gene-flow model of speciation [38], leading them to propose that ecotones may be integral to the production and maintenance of high biodiversity in tropical rain forests. Quantification of morphological and geographic distances in olive sunbird (*Nectarinia olivacea*) populations in West African forests and ecotones revealed similar divergence patterns [38].

Smith studied morphological divergence in another Central African species, the black-bellied seedcracker (*Pyrenestes ostrinus*). Seedcrackers show polymorphism in bill size. A megabilled morph was found in the ecotone that specializes on a very hard-seeded sedge found only in ecotonal areas [27]. This ecotonal megamorph was maintained in the population, despite high levels of gene flow with rain forest populations that had only smaller-billed morphs, owing to its selective advantage for feeding on the hard seeds. Morphological divergence between habitats across an ecotone was also found in leaf-litter skinks (*Carlia rubigularis*) in the wet tropical rain forest of Australia [34]. Adult skinks occurring across sharp ecotones from open (wet sclerophyll) forests to adjacent rain forests showed large morphological and life history differences over short distances despite moderate to high levels of mitochondrial gene flow [34]. Populations occurring across the ecotone had larger size differences than populations located dozens to hundreds of kilometers away that were geographically isolated millions of years ago, suggesting that in this case, and perhaps in others that await research, speciation with gene flow may have importance.

If ecotones regions harbor unique and endemic species and alleles, this may provide support for the notion that these regions may also have importance in speciation. If this is the case, ecotonal regions are expected to contain a preponderance of recently derived species that are yet to expand their ranges (neoendemics). Fjeldså and Rahbek [7] suggested that more recently evolved species are concentrated in transitional ecotones surrounding the main central African rain forest. This reasoning is consistent with the finding that terrestrial ecotones sustain high morphological divergence, providing evidence that current speciation processes may indeed be taking place in these regions [27, 33, 37].

### ***Ecotones, Ecological Gradients, and Species Ranges***

One of the important questions that arise is what are the processes that lead to higher species richness in ecotonal regions compared with adjacent areas? Evolutionary processes, as discussed above, may be one explanation. Ecological factors may also have importance in shaping this pattern. Several authors, such as Gosz [11] and Risser [32], have suggested that transitional areas not only share the two types of environments of the habitats that coincide in the ecotone, but also have a unique ecotonal environment. Indeed, Odum [30] proposed that transition zones often support a unique community with characteristics additional to those of the communities that adjoin the ecotone, although also commenting this is by no means a universal phenomenon. Studies testing these predictions show mixed results, some pointing toward the occurrence of ecotonal species, while others not finding evidence for species unique and highly abundant in ecotones. The inconsistency among studies is complicated by the fact that different species, systems, scales, and regions were used in different studies or due to methodological factors, such as differences in sampling and analysis approaches.



In addition, ecotones tend to shift in space and time over several spatial scales [11, 19], as a response to climatic variation, other environmental changes [6, 19, 29], and human activity [10]. Ecotones show high spatial and temporal heterogeneity, which may serve as important factors contributing to their high genetic and species diversity [32]. For example, multiple ecotones can be defined within and around the African Sahel (Fig. 9.1a), depending on the scale of interest and on the definitions used [1]. The different transitions (e.g., that between the Sahel and the desert to the north) experience shifts in time and space, showing high spatiotemporal variability. Another, simpler, process shaping this pattern is that ecotones, comprising meeting areas between adjoining communities, include a combination of species from two or more community types [32]. Ecotonal areas often comprise the edge of the range for species on both sides and are where many peripheral populations occur [17, 35].

An important question is whether populations occurring in ecotonal areas are viable populations that exist over time within ecotones, or are rather present temporarily due to the constant flow of individuals from other parts of their range into the ecotone areas, are not self-sustainable over time, and will disappear if this flow is stopped. Shmida and Wilson [35] proposed that the high number of species in transitional areas could be due to a process they called the mass effect, which is the flow of individuals from favorable to unfavorable areas. For species that reach the margins of their range at the ecotone, this effect may result in some individuals of a given species establishing in ecotonal areas where they cannot maintain viable populations, existing in sinks adjacent to larger source populations [35]. This may lead to increased species richness in ecotonal areas, which is maintained by constant immigration of individuals from more favorable environments. Some evidence for the existence of mass effects can be found in the literature, yet these effects seem to be rather weak, and it is currently unclear whether they can indeed act as a major factor generating high diversity in ecotones [21].

The mass effect, however, does not predict the occurrence of unique or endemic ecotonal species or genotypes. If some species or genotypes are characteristic of an ecotone or occur at the ecotone in higher abundances than in the neighboring habitats, as proposed above, this could suggest that some ecotone populations are ecologically viable. Several recent studies have found peak genetic and morphological diversity within species in ecotone regions, with populations in these regions harboring unique and rare alleles not found elsewhere [17]. For example, a study examining allozyme (protein level) diversity within chukar partridge (*Alectoris chukar*) populations across a rainfall gradient from northern to southern Israel found that the highest levels of diversity occur in the sharp ecotone area between the Mediterranean region and the desert, in the northern Negev area. Populations in this area not only showed higher genetic diversity based on 32 loci (proteins) examined, but also had unique and rare alleles that did not occur elsewhere across the range [14]. The same species also had peak levels of morphological diversity in the ecotone region based on 35 traits and 23 ratios between traits [15]. More studies on genetic and species uniqueness in ecotonal areas are needed to enable generalizations.

## ***Agricultural, Urban and Human-Related Ecotones***

The early literature discussing ecotones largely dealt with natural ecotones that are generated by environmental factors such as soils, geology, and climate. More recent research is increasingly including human-related boundaries. Human activity is generating boundaries that did not exist before, changing their steepness and shifting ecotonal location. These boundaries include a diversity of ecotone types, such as forest clear-cut edges, margins between built-up and natural landscapes, and human-generated features, such as lakes and plantations. Research on these human-generated ecotones and their effects on biodiversity are related to a study area that is sometimes termed “countryside biogeography,” examining biodiversity in human-dominated landscapes.

Another recently developing research area that is relevant is that of urban ecology. Sharp, human-caused transitions may result from human activities such as urbanization, land-use changes, agriculture, grazing, or burning (see Fig. 9.1). These boundaries occur at multiple spatial scales, ranging from local ecotones between agricultural plots, urban areas, and roads, and their neighboring native habitat, to large-scale ecotones such as shifting desert borders owing to desertification processes and river divergence (Fig. 9.1). These ecotones may be either static and fixed in space or dynamic and shifting in location over space and time.

A substantial amount of work in both natural and human-related landscapes has focused on what has been called the “edge effect.” This is the effect of the juxtaposition of contrasting environments on an ecosystem. It refers to how the local environment changes along some type of boundary, or edge and how biodiversity is affected by such edges. This idea is attributed by animal ecologists to Aldo Leopold and his 1933 book *Game Management*. It encompasses a wide range of both biotic and abiotic trends associated with boundaries between adjacent habitat types, natural or anthropogenic. Much of the reference to edge effects in the recent landscape ecology literature has been related to human-caused boundaries, and especially to boundaries between forest fragments and neighboring patches of habitat that have been cleared. Again, there are no clear-cut conclusions as to the effect of human-generated ecotones on biodiversity. The response largely depends on the type of edge and its history as well the species in focus.

Its conservation implications are therefore complex and deserve further scientific attention. A vast amount of research has been done on the effect of forest edges, especially the effect of human-made forest fragments and their edges on biodiversity. A review of edges [28] suggested there are many discrepancies in the literature, and a better understanding and search for general patterns requires a much more mechanistic approach to examine the processes underlying such patterns. In this context, there has been much effort to understand the effect of forest edges on predation, brood parasitism, and the breeding success of birds. Paton [31] found that in the majority of studies, nest success varied near edges with an increase in both depredation and brood parasitism rates. The most conclusive studies suggest that edge effects in birds usually occur within 50 m of an edge [31]. Since these reviews, multiple studies on dozens of species and regions have been conducted.

## Implications for Biodiversity, Conservation Planning, and Sustainability

Whereas better understanding of the effects of ecotones on biodiversity is important for evolutionary and ecological pure science purposes, it also has many implications for conservation of biodiversity, sustainability, and practical decision-making. Some scientists have argued that because ecotones hold marginal populations at the edge of the range of many species, where abundances may be lower and populations more prone to local extinctions than other parts of the range, these ecotonal areas have low value for conservation as they will not persist over time, for example, if the surrounding environments become fragmented (e.g., [9]). There has been an interesting discussion in the literature in recent years regarding whether transitional areas are valuable for conservation (e.g., see Smith et al. [36] versus Brooks [4]). Substantial conservation attention has been given in recent years to the understanding and mapping of biodiversity patterns and the underlying processes, and toward predicting the effects of global change. Ecotone and boundary regions, where change, shifts, and variability occur naturally in both space and time, could serve as useful models for understanding, monitoring, and predicting the response of individuals, populations, and communities to changing environments [2, 6, 29]. In addition, while some scientists suggest that ecotone populations are more likely to be negatively affected by climate change [9], other researchers have argued that ecotonal areas sustain populations that are adapted to changing, fluctuating, and unstable environments and, as such, these populations may better be able to persist in the face of predicted change (see further discussion in [17]). This is especially relevant since climate shifts are expected, according to some studies, to be rapid and extreme in boundary regions between ecosystems [2]. By examining changes in ecotone locations over time, these areas may potentially serve as “early warning” indicators of global changes [6, 29]. However, the response depends on the spatial and temporal scales examined and may be a useful indicator mainly at global spatial scales and rather coarse timescales. Therefore, this area deserves further attention owing to the complexity of the factors shaping the location of ecotones in space and time.

Much research in the past decade has focused on prioritizing conservation efforts and determining what areas are most important and valuable for conservation. Two main approaches have been suggested: The first approach includes a search for biodiversity hotspots, or areas with especially high species richness, endemism, and rarity. A second approach has been to select areas that are complementary, and hold biodiversity not present in other areas. Ecotones may provide a unique opportunity to conserve both high species richness and high complementarity. Due to their relatively small size, it may prove a cost-effective strategy to further conserve ecotone regions and to explicitly include them in future systematic conservation planning, given they potentially provide a high return on investment having small area and high biodiversity. Undoubtedly, if these areas have the potential to maintain and to generate species richness as well as unique and novel species and forms, they deserve far greater research attention than they are currently receiving [36]. Nevertheless, conservation plans for ecotones should not be considered independent of

their surrounding environments. Ecotonal regions are important for our understanding of evolutionary (such as speciation, divergence with gene flow, and adaptation) and ecological processes shaping biodiversity (e.g., response of populations to fluctuating environments). They may enable us to better predict the responses of populations to environmental change and to further identify previously neglected biodiversity hotspots valuable for biodiversity research and conservation.

## Future Directions

Research on the effect of ecotones on biodiversity is an important future direction in the face of global change, including land-use and climate change. Because ecotones are areas where shifts in environmental conditions occur in space and time, they may serve as useful indicators of environmental change and of the response of ecosystems to shifts in climate. The degree of effectiveness of ecotones as early predictors of the impacts of change and the ways that ecological communities and systems respond to change may be an important future direction. Ecotones can sustain unique forms or species that are less abundant or do not occur elsewhere. In addition, studies suggest that ecotones are areas where some populations are diverging to new species in the face of gene flow (across the ecotone). It is important to examine the generality of these patterns and processes in different regions, spatial and temporal scales, and groups.

Another future direction is the application of multi-disciplinary approaches from other fields of science in studying and quantifying ecotones. For example, much work has been done in physics on transitions between states (liquid–solid etc.), which could be applied to work on environmental transitions ecotones. More work on the interactions between native and alien species and the role of ecotones in these interactions should be done to examine the hypothesis that ecotones are barriers to invasion between communities. The importance of ecotones to the generation and conservation of biodiversity, especially in the face of global climate and other environmental changes is an area of potential research and conservation investment that should further be explored and studied. The role of ecotones in promoting sustainability and its emerging science is an open area, which should be further explored in future work.

## Bibliography

### *Primary Literature*

1. Agnew CT, Chappell A (2000) Drought in the Sahel. *Geo J* 48:299–311
2. Allen CD, Breshears DD (1998) Drought-induced shift of a forest-woodland ecotone: rapid landscape response to climate variation. *Proc Natl Acad Sci* 95:14839–14842
3. Applied Sciences Directorate <https://zulu.ssc.nasa.gov/mrsid/>. Accessed Nov 2006
4. Brooks TM (2001) Prioritizing hotspots, representing transitions. *Trends Ecol Evol* 16:673

5. Colwell RK (2006) EstimateS: statistical estimation of species richness and shared species from samples. pp User's guide and application
6. Crumley CL (1993) Analyzing historic ecotonal shifts. *Ecol Appl* 3:377–384
7. Fjelds  J, Rahbek C (1998) Continent-wide conservation priorities and diversification processes. In: Mace G, Balmford A, Ginsberg J (eds) *Conservation in a changing world*. Cambridge University Press, Cambridge, pp 107–138
8. Fortin M-J, Olson RJ, Ferson S et al (2000) Issues related to the detection of boundaries. *Landsc Ecol* 15:453–466
9. Gaston KJ, Rodrigues ASL, van Rensburg BJ, Koleff P, Chown SL (2001) Complementary representation and zones of ecological transition. *Ecol Lett* 4:4–9
10. Gehrig Fasel J, Guisan A, Zimmermann N (2007) Tree line shifts in the Swiss Alps: climate change or land abandonment? *J Veg Sci* 18:571–582
11. Gosz JR (1993) Ecotone hierarchies. *Ecol Appl* 3:369–376
12. Hansen A, Di Castri F (1992) *Landscape boundaries: consequences for biotic diversity and ecological flows*. Springer, New York
13. Holland M, Risser P, Naiman R (1991) *Ecotones*. Chapman & Hall, New York
14. Kark S, Alkon PU, Safriel UN, Randi E (1999) Conservation priorities for chukar partridge in Israel based on genetic diversity across an ecological gradient. *Conserv Biol* 13:542–552
15. Kark S, Mukerji T, Safriel UN, Noy-Meir I, Nissani R, Darvasi A (2002) Peak phenotypic diversity in an ecotone unveiled in the chukar partridge by a novel estimator in a dependent sample (EDS). *J Anim Ecol* 71:1015–1029
16. Kark S, Allnutt TF, Levin N, Manne LL, Williams PH (2007) The role of transitional areas as avian biodiversity centres. *Glob Ecol Biogeogr* 16:187–196
17. Kark S, van Rensburg BJ (2006) Ecotones: marginal or central areas of transition? *Israel J Ecol Evol* 52:29–53
18. Kemp JM (2000) Zoogeography of the coral reef fishes of the north-eastern Gulf of Aden, with eight new records of reef fishes from Arabia. *Fauna Arab* 18:293–321
19. Kent M, Gill WJ, Weaver RE, Armitage RP (1997) Landscape and plant community boundaries in biogeography. *Prog Phys Geogr* 21:315–353
20. Koleff P, Gaston KJ, Lennon JJ (2003) Measuring beta diversity for presence–absence data. *J Anim Ecol* 72:367–382
21. Kunin WE (1998) Biodiversity at the edge: a test of the importance of spatial “mass effects” in the Rothamsted Park Grass experiments. *Proc Natl Acad Sci* 95:207–212
22. Levanoni O, Levin N, Turb  A, Pe'er G, Kark S (2011) Can we predict butterfly diversity along an elevation gradient from space? *Ecography*. doi:10.1111/j.1600-0587.2010.06460.x, In press
23. Levin N, Shmida A, Levanoni O, Tamari H, Kark S (2007) Predicting mountain plant richness and rarity from space using satellite derived vegetation indices. *Divers Distrib* 13:692–703
24. Lloyd KM, McQueen AAM, Lee BJ, Wilson RCB, Walker S, Wilson JB (2000) Evidence on ecotone concepts from switch, environmental and anthropogenic ecotones. *J Veg Sci* 11:903–910
25. MDA Federal (2004) *Landsat Geocover (1990/TM) Edition Mosaics; Tiles N-37-00 and S-37-00 (Mt. Kenya), N-14-15\_20 (Hawaii), and S-21-10 (Amazon)*. US Geological Survey, Sioux Falls, South Dakota
26. Mena J, V zquez Dom nguez E (2005) Species turnover on elevational gradients in small rodents. *Glob Ecol Biogeogr* 14:539–547
27. Moritz C, Patton JL, Schneider CJ, Smith TB (2000) Diversification of rainforest faunas: an integrated molecular approach. *Annu Rev Ecol Syst* 31:533–563
28. Murcia C (1995) Edge effects in fragmented forests: implications for conservation. *Trends Ecol Evol* 10:58–62
29. Neilson RP (1993) Transient ecotone response to climate change: some conceptual and modelling approaches. *Ecol Appl* 3:385–395
30. Odum EP (1953) *Fundamentals of ecology*. W. B. Saunders, Philadelphia
31. Paton PWC (1994) The effect of edge on avian nest success: how strong is the evidence? *Conserv Biol* 8:17–26
32. Risser PG (1995) The status of the science examining ecotones. *Bioscience* 45:318–325
33. Schilthuizen M (2000) Ecotone: speciation-prone. *Trends Ecol Evol* 15:130–131

34. Schneider CJ, Smith TB, Larison B, Moritz C et al (1999) A test of alternative models of diversification in tropical rainforests: ecological gradients vs. Rainforest refugia. *Proc Natl Acad Sci* 96:13869–13873
35. Shmida A, Wilson MV (1985) Biological determinants of species diversity. *J Biogeogr* 12:1–20
36. Smith TB, Kark S, Schneider CJ, Wayne RK, Moritz C (2001) Biodiversity hotspots and beyond: the need for conserving environmental transitions. *Trends Ecol Evol* 16:431
37. Smith TB, Wayne RK, Girman DJ, Bruford MW (1997) A role for ecotones in generating rainforest biodiversity. *Science* 276:1855–1857
38. Smith TB, Wayne RK, Girman DJ, Bruford MW (2000) Evaluating the divergence-with-gene-flow model in natural populations: the importance of ecotones in rainforest speciation. In: Bermingham E, Dick CW, Moritz C (eds) *Rainforests past and future*. University of Chicago Press, Chicago, pp 148–165
39. Stöckli R, Vermote E, Saleous N, Simmon R, Herring D (2005) The blue marble next generation – a true color earth dataset including seasonal dynamics from MODIS. NASA Earth Observatory, Goddard Space Flight Center, Greenbelt
40. van Rensburg BJ, Koleff P, Gaston KJ, Chown SL (2004) Spatial congruence of ecological transition at the regional scale in South Africa. *J Biogeogr* 31:843–854
41. van Rensburg BJ, Levin N, Kark S (2009) Spatial congruence between ecotones and range-restricted species: implications for conservation biogeography at the sub-continental scale. *Divers Distrib* 15:379–389
42. Visible Earth <http://visibleearth.nasa.gov/>
43. Wilson MV, Shmida A (1984) Measuring beta diversity with presence–absence data. *J Ecol* 72:1055–1064
44. Womble WH (1951) Differential systematics. *Science* 114:315–322
45. Zalewski M, Schiemer F, Thorpe J (2001) Fish and land-inland water ecotones: overview and synthesis. *Ecohydrol Hydrobiol* 1:261–266

## ***Books and Reviews***

- Blake JG, Loiselle BA (2000) Diversity of birds along an elevational gradient in the Cordillera Central, Costa Rica. *Auk* 117:663–686
- Kark S (2007, updated 2011) Effects of ecotones on biodiversity. In: Levin S (ed) *Encyclopedia of biodiversity*. Elsevier, Oxford, p 1–10
- Kluge J, Kessler M, Dunn R (2006) What drives elevational patterns of diversity? A test of geometric constraints, climate and species pool effects for pteridophytes on an elevational gradient in Costa Rica. *Glob Ecol Biogeogr* 15:358–371
- Mac Nally R, Molyneux G, Thomson J, Lake P, Read J (2008) Variation in widths of riparian-zone vegetation of higher-elevation streams and implications for conservation management. *Plant Ecol* 198:89–100
- McCain C (2009) Global analysis of bird elevational diversity. *Glob Ecol Biogeogr* 18:346–360
- Odum E, Barrett G (1971) *Fundamentals of ecology*, 5th edn. W.B. Saunders, Philadelphia
- Oommen M, Shanker K (2005) Elevational species richness patterns emerge from multiple local mechanisms in Himalayan woody plants. *Ecology* 86:3039–3047
- Sanchez-Rodriguez J, Baz A (1995) The effects of elevation on the butterfly communities of a Mediterranean mountain, Sierra de Javalambre, central Spain. *J Lepid Soc* 49:192–207
- Senft A (2009) Species diversity patterns at ecotones MSc thesis, University of North Carolina, Chapel Hill
- Terborgh J (1971) Distribution on environmental gradients: theory and a preliminary interpretation of distributional patterns in the avifauna of the Cordillera Vicabamba, Peru. *Ecology* 52:23–40